

Lake Belle View Restoration | Village of Belleville, WI

Background

Lake Belle View is created by an impoundment of the Sugar River. Although there are about 94 acres of open water, the lake is only 1-2 feet deep in most areas.

The lake has few plants, plenty of undesirable fish like carp, and the large quantities of strong-smelling algae are unpleasant to look at.



thick benthic algae

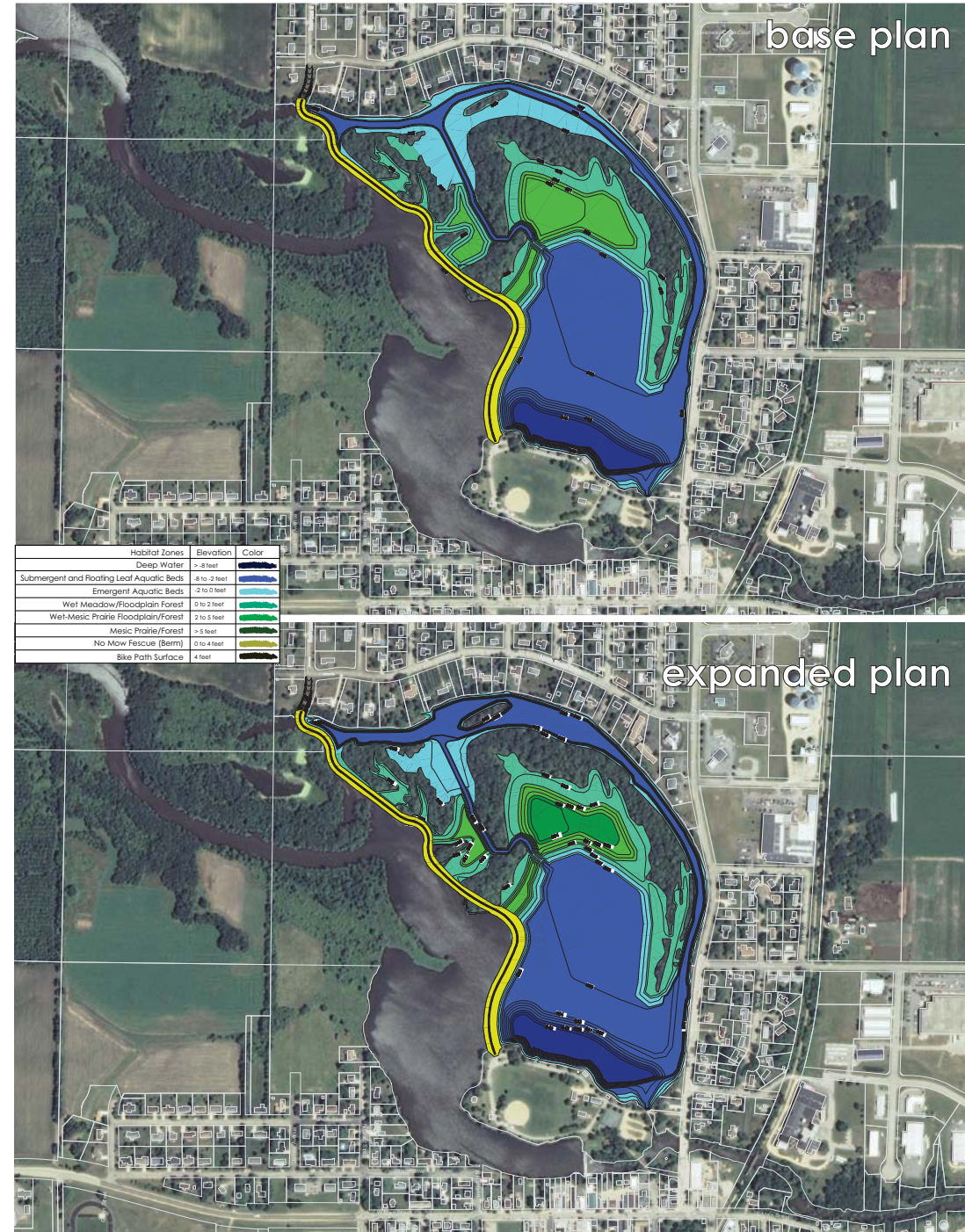
Water quality is a direct reflection of the land use within the 172 square mile watershed. Urban and agricultural uses lead to sediment and nutrients like phosphorus entering the lake. Over time, phosphorus causes algae to grow, and sediment deposition creates a soft bottom to the lake, impacting fish habitat.

site location map



The goal: to enhance the recreational opportunities of Lake Belle View and the Sugar River through separation of the lake and river, to increase lake depths, to cultivate diversity of aquatic habitat, to improve diversity and quality of wetland habitat, and to promote the eco-system's natural beauty.

Construction Beginning in 2010



Project Summary

In September 2008, the Village of Belleville hired a multidisciplinary team of consultants lead by Montgomery Associates to review previous lake studies and to identify lake restoration alternatives.

The project elements include:

- Separating Lake Belle View from Sugar River with a 3,200 foot long berm.
- Dredging 105,000 cubic yards for the basic plan, and an additional 40,000 cubic yards for the expanded plan.
- Creating a new pedestrian path connecting the north side to community park.
- Using dredged materials to enhance and expand existing island habitat.
- Deepening the lake.
- Establishing a warm water fishery.
- Incorporating a canoe/kayak loop around the lake.



Help erase the carp!

— \$2.6 million: expanded plan
 — \$2.0 million: base plan
 — \$1.2 million: current funding

- Village Lake Fund: \$830,000
- State Grant: \$200,000
- Dane County: \$150,000
- Private Contributions: \$125,000

If you would like to donate, please contact April Little at (608) 424-1655

Potential Add-on Projects



- Fish Ladder
- Kayak Run
- Community Park Improvements